

Demographic Analysis of Henderson County

Prepared by
Jason Bremner for
Children and Family Resource Center

Goals

1. Develop a demographic profile of Henderson County for the introductory section of the United Agenda for Children report.
2. Provide demographic and socio-economic data to the United Agenda for Children leadership group to identify a representative group of participants for the community forum in October.

Sources of Data

- All data were acquired from public access U.S. Census Bureau data: www.census.gov
 - Census 2000
 - American Community Survey 2005 (ACS)
 - A new nationwide survey designed to provide communities with a fresh look at how they are changing.
 - Population Estimates 2006

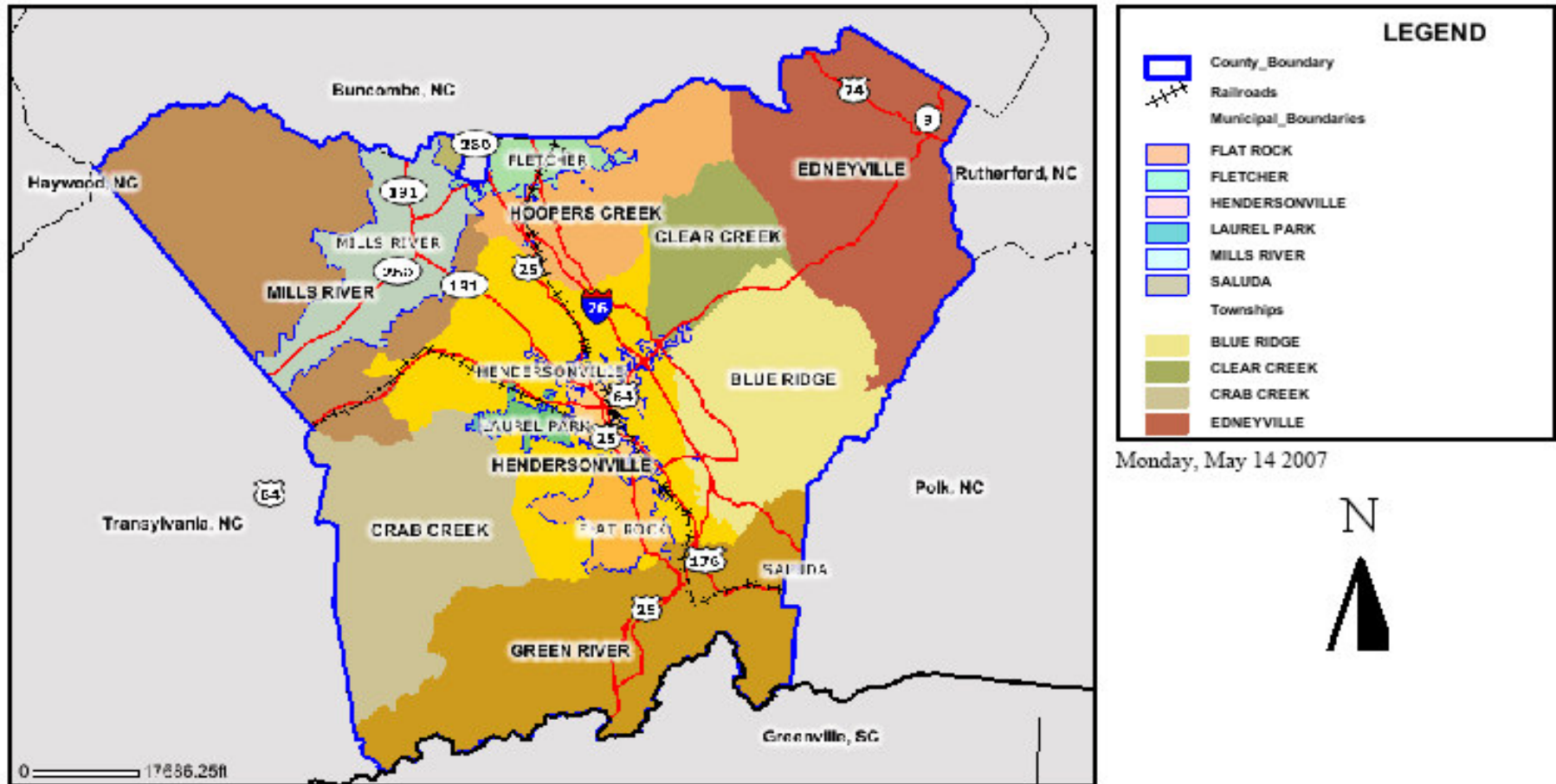
Census vs. Sample

- Census – a count of all individuals in a chosen area.
 - Measures are true values.
- Sample- selection of a representative group of individuals.
 - Estimates of measures are made based on the sample. All measures based on a sample will have an element of error (confidence intervals).

Sample Data

- American Community Survey 2005
 - A sample of ~ 3 million households
- Census 2000
 - Data for certain characteristics (e.g. income) are based on a sample of the original census data.
- Measures from sample must be interpreted with some caution.

Townships and Municipalities - Henderson County NC Public Access



WARNING: THIS IS NOT A SURVEY!

This map is prepared for the inventory of real property found within this jurisdiction, and is compiled from recorded deeds, plats, and other public records and data. Users of this map are hereby notified that the aforementioned public primary information sources should be consulted for verification of the information contained on this map. The County and mapping company assume no legal responsibility for the information contained on this map.

Henderson County

Total Population and Rates of Change

Table 1. Population Estimates and Rates of Change for Henderson County

Total Population (July, 2006)	99,033
Population Change (2000-2006)	9,829
Percent Change in Population (2000-2006)	11.00%
Annual Population Growth Rate (2005-2006)	1.9%

Source: U.S. Census Bureau Population Estimates

Age Distribution

Table 2. The number of Henderson County Residents in Select Age Groups

Age Group	1990	2000	2005
0-17	14,577	18,552	20,609
18-64	39,569	51,280	55,231
65+	15,139	19,341	19,541
Total	69,285	89,173	95,381

Sources: United States Census Bureau, Census 1990, Census 2000, ACS 2005

Age Composition

Table 3. Age Composition of the Henderson County Population and Rates of Change (%)

Age Group	1990	2000	2005	Rate of Change (%) 2000-2005
0-17	21.04	20.80	21.61	11.09
18-64	57.11	57.51	57.91	7.70
65+	21.85	21.69	20.49	1.03
Total	100.00	100.00	100.00	

Sources: United States Census Bureau, Census 1990, Census 2000, ACS 2005

Racial/Ethnic Composition

Table 4. The Racial/Ethnic Composition of the Henderson County Population.

		Percent
Total population	95,381	100
Not Hispanic or Latino		
White alone	83,122	87.15
Black or African American alone	3,374	3.54
American Indian and Alaska Native alone	135	0.14
Asian alone	282	0.30
Some other race alone	252	0.26
Two or more races	496	0.52
Hispanic or Latino (of any race)	7,720	8.09

Source: United States Census Bureau, ACS 2005

Growth in the Hispanic/Latino Population

Table 5. Change in the Hispanic/Latino Population between 2000 and 2005.

Hispanic/Latino Population 2005	7,720
Hispanic/Latino Population 2000	4,880
Growth in Hispanic/Latino Population	2,840
Percent Growth in Hispanic/Latino Population	58.20

Sources: United States Census Bureau, Census 2000, ACS 2005

Growth in the Hispanic/Latino Child Population

Table 6. The Percentage of Children in Young Age Groups that are Hispanic/Latino.

	2005	2000
Under 5 years	19.31	12.00
5 to 9 years	15.77	8.03
10 to 14 years	9.69	6.88
15 to 17 years	4.67	7.75

Sources: United States Census Bureau, Census 2000, ACS 2005

Household Income

Table 7. Distribution of Household Income in Henderson County.

Income and Benefits	2005	2000
Less than \$25,000	32.59	29.84
\$25,000 to \$74,999	49.23	53.95
75,000 or more	18.18	16.21
Median household income (dollars)	37,031	38,109

Sources: United States Census Bureau, ACS 2005

Racial/Ethnic Comparison of Income

Table 8. Median Income by Race for Henderson County

Race	Median Household Income (Dollars)
White	39,044
Black	19,273
Hispanic/Latino	28,389

Source: United States Census Bureau, Census 2000

Poverty Status

Table 9. Poverty Status in Henderson County for 2000 and 2005

	2005	2000
Total No. of Children	20,609	18,552
Children in Poverty	4,659	2,719
Percent of Children in Poverty	22.6	14.7
Percent of People in Poverty	12.1	9.7

Source: United States Census Bureau, ACS 2005

Poverty Status by Race

Table 10. Poverty Status by Race in Henderson County.

Henderson County			
Race	Persons Below Poverty Line	Total Population	Percentage of the Race/Ethnicity in Poverty
White	6,782	80,885	8.4
Black	829	2,436	34.0
Hispanic/Latino	1,053	4,830	21.8

Source: United States Census Bureau, Census 2000

Family Structure

Table 11. Family Structure of Households with Children Under 18 Years in Henderson County

		Percent
Households with one or more people under 18 years:	10,589	100.00
Family households:	10,482	
Married-couple family	7,794	73.60
Other family:	2,688	
Male householder, no wife present	703	6.64
Female householder, no husband present	1,985	18.75
Non-family households:	107	1.01

Source: U.S. Census Bureau. Census 2000.

Family Structure by Race

Table 12. Family Structure of Households with Children Under 18 Years by Race

Family households:	White	Black	Hispanic/Latino
Married-couple family:	84.57	48.40	71.13
Other family:	15.43	51.60	28.87
	100.00	100.00	100.00

Source: U.S. Census Bureau. Census 2000.

Geographic Distribution

Table 13. Geographic Distribution of the Henderson County Population by Township.

	Persons	Percent
Blue Ridge township	8,487	9.52
Clear Creek township	4,616	5.18
Crab Creek township	4,109	4.61
Edneyville township	3,454	3.87
Green River township	3,948	4.43
Hendersonville township	43,697	49.00
Hoopers Creek township	9,994	11.21
Mills River township	10,868	12.19

Source: United States Census Bureau, Census 2000

Urban/Rural Composition

Table 14. Urban/Rural Composition of the Henderson County Population.

	Henderson County, North Carolina	
Total:	89,173	100.00
Urban:	47,398	53.15
Rural	41,775	46.85

Source: United States Census Bureau, Census 2000

Urban – Rural Composition of the Townships

Table 15. Urban/Rural Composition of Henderson County Population by Township.

	Blue Ridge	Clear Creek	Crab Creek	Edney -ville	Green River	Henderso -nville	Hoope -rs Creek	Mills River
Total:	8,487	4,616	4,109	3,454	3,948	43,697	9,994	10,868
Urban:	823	1,730	0	0	0	37,931	6,655	259
Rural	7,664	2,886	4,109	3,454	3,948	5,766	3,339	10,609

Source: United States Census Bureau, Census 2000

Racial/Ethnic Composition by Township

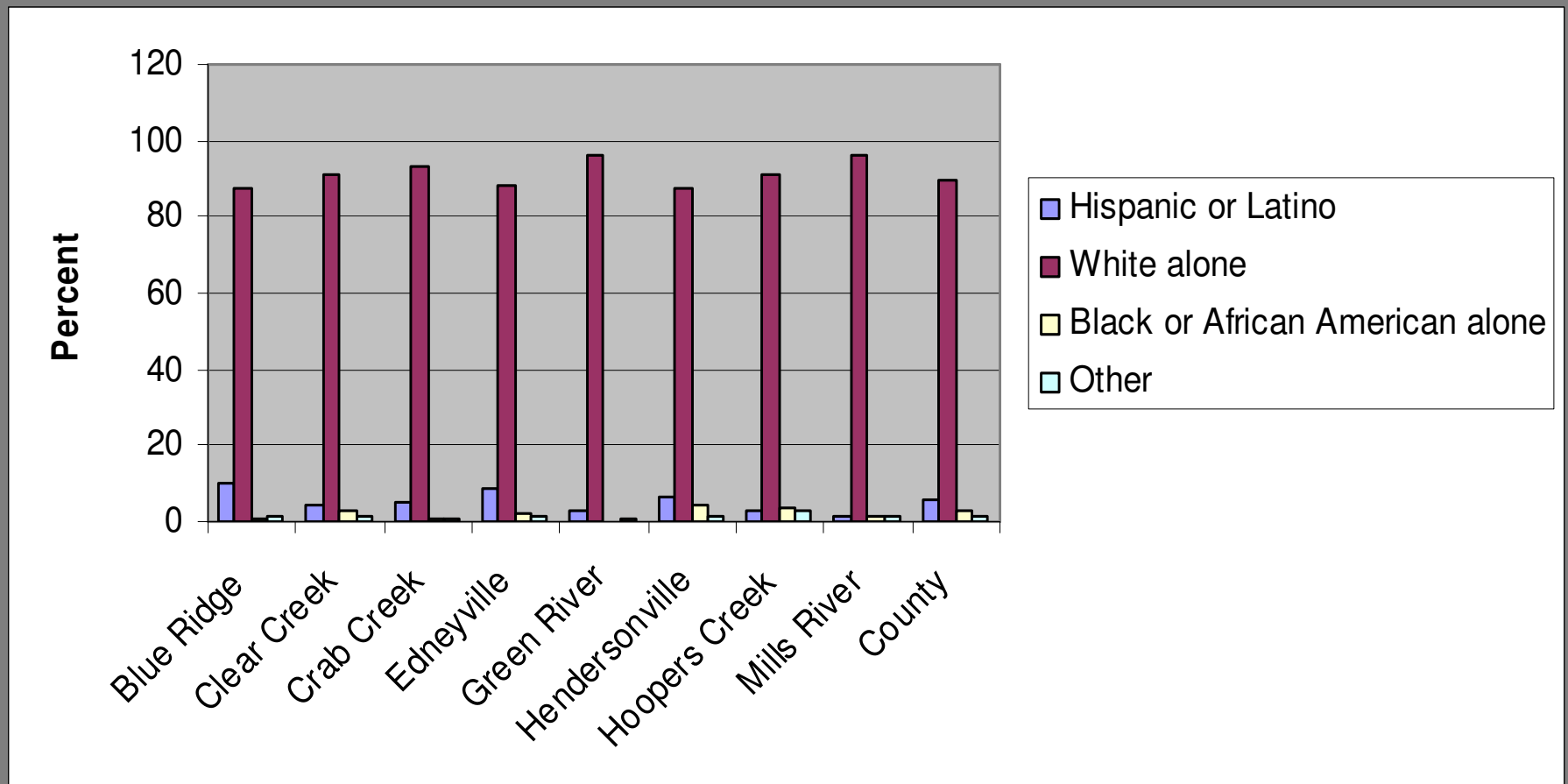
Table 16. Racial/Ethnic Comparison of the Townships of Henderson County.

	Blue Ridge	Clear Creek	Crab Creek	Edne yville	Green River	Henders onville	Hoop ers Creek	Mills River
Total:	100.0	100.0	100.0	100.0	100.0	100.0	100.0	100.0
Not Hispanic or Latino:								
White alone	87.6	91.1	93.3	88.5	96.0	87.6	90.8	96.2
Black alone	0.6	3.0	0.8	1.9	0.2	4.3	3.7	1.2
Hispanic or Latino	10.1	4.2	4.8	8.4	3.1	6.3	2.9	1.5

Source: United States Census Bureau, Census 2000

Racial Composition by Township

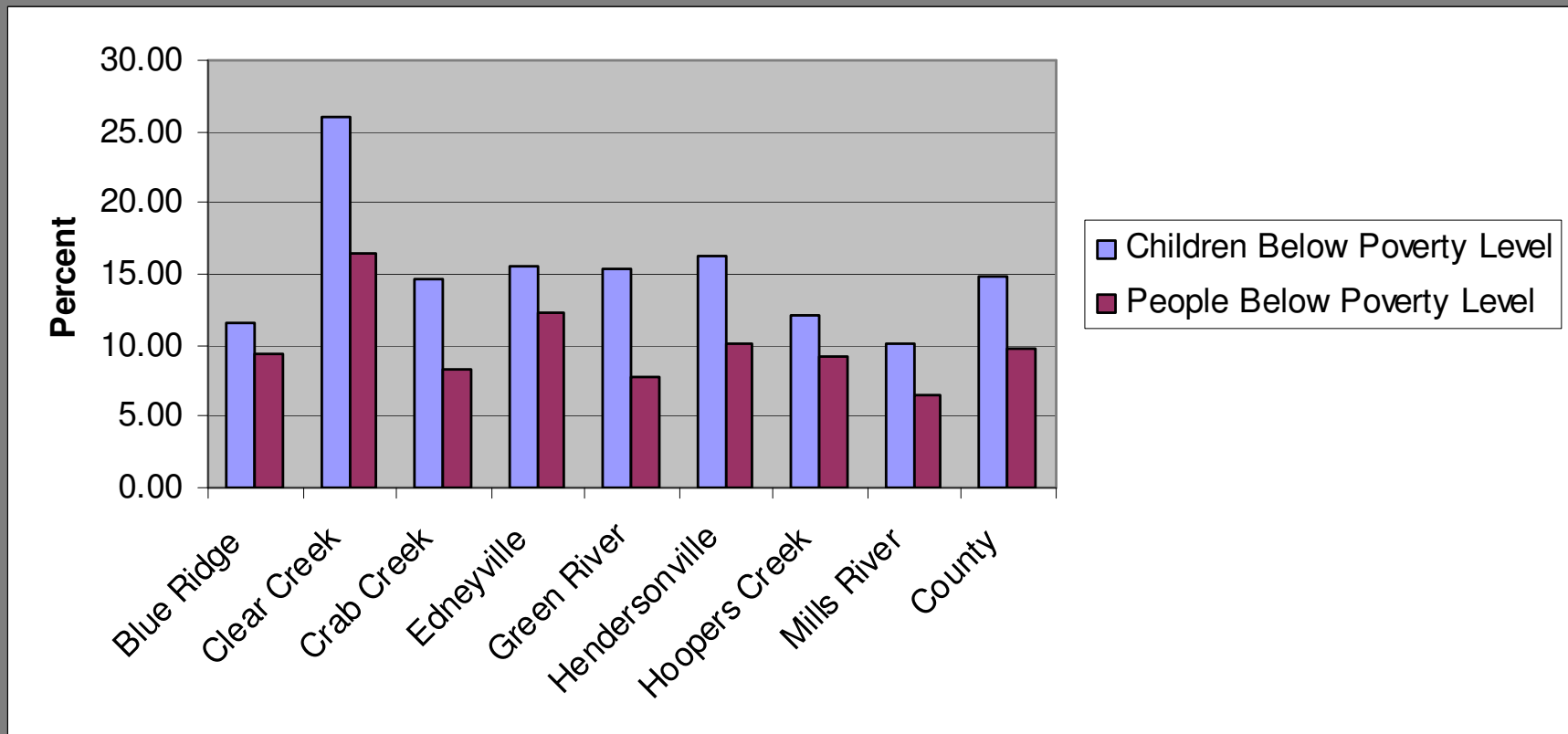
Figure 1. Racial/Ethnic Composition of the Townships of Henderson County.



Source: United States Census Bureau, Census 2000

Poverty Status

Figure 2. The Percent of Each Township's Population Living Below the Poverty Level.



Source: United States Census Bureau, Census 2000

Where do Children in Poverty Live?

Table 17. The Location of Children Living Below the Poverty Level for Henderson County.

	Number of Children Living in Poverty	Percentage of the Henderson County children in poverty Living in the Township
Blue Ridge	221	13.06
Clear Creek	149	8.81
Crab Creek	120	7.09
Edneyville	79	4.67
Green River	23	1.36
Hendersonville	818	48.35
Hoopers Creek	162	9.57
Mills River	120	7.09
County	1692	100.00

Source: United States Census Bureau, Census 2000

School Enrollment

Table 18. The Percent of Children Enrolled in Schools in Henderson County by Township.

	Percent 3 and 4 year olds not enrolled	Percent 5-17 year olds not enrolled
Blue Ridge	66.10	3.68
Clear Creek	47.30	3.86
Crab Creek	72.53	5.61
Edneyville	66.28	5.21
Green River	68.18	2.81
Hendersonville	41.01	3.92
Hoopers Creek	51.88	3.83
Mills River	39.15	1.23
County	50.63	3.62

Source: United States Census Bureau, Census 2000

Selecting a Sample for the Forum

- Choose Important Characteristics

Table 19. Mecklenburg Co Comparison of Demographics with Attendees of the Forum.

Who Attended the United Agenda for Children Town Hall Meeting?					
United Agenda for Children sought to represent the county's diversity. Participants' demographics are compared below to the county's make-up.					
<u>Gender</u>	<u>Dec. 11</u>	<u>County</u>	<u>Race</u>	<u>Dec. 11</u>	<u>County</u>
Female	66%	51%	African-American	44%	28%
Male	34%	49%	Asian	1%	5%
<u>Age</u>			Caucasian	44%	58%
15 to 21	11%	12%	Hispanic or Latino	6%	9%
22-34	16%	28%	Native American	<1%	<1%
35-44	29%	22%	Multi-Racial	3%	3%
45-59	35%	23%	Other	2%	<1%
60 and better	9%	15%	<u>Geography</u>		
<u>Household Income</u>			District 1	18%	17%
Less than \$25,000	8%	21%	District 2	12%	17%
\$25,000 - \$49,999	19%	29%	District 3	15%	17%
\$50,000 - \$74,999	17%	21%	District 4	15%	17%
\$75,000 - \$99,999	17%	12%	District 5	23%	17%
\$100,000 - \$149,999	19%	10%	District 6	14%	17%
Over \$150,000	15%	7%	Outside Mecklenburg Co.	3%	n/a
Not Sure	6%	n/a			
<u>Residence in Mecklenburg Co.</u>					
Less than 1 year	3%	7%			
1-5 years	16%	21%			
6-10 years	14%	18%			
11-20 years	30%	19%			
More than 20 years	35%	35%			
Outside Mecklenburg Co.	2%	n/a			

Characteristics of Interest

- Proposed Starting Points
 - Township
 - Race/Ethnicity
- Additional Recruitment
 - Income/Poverty Status
 - Family Structure